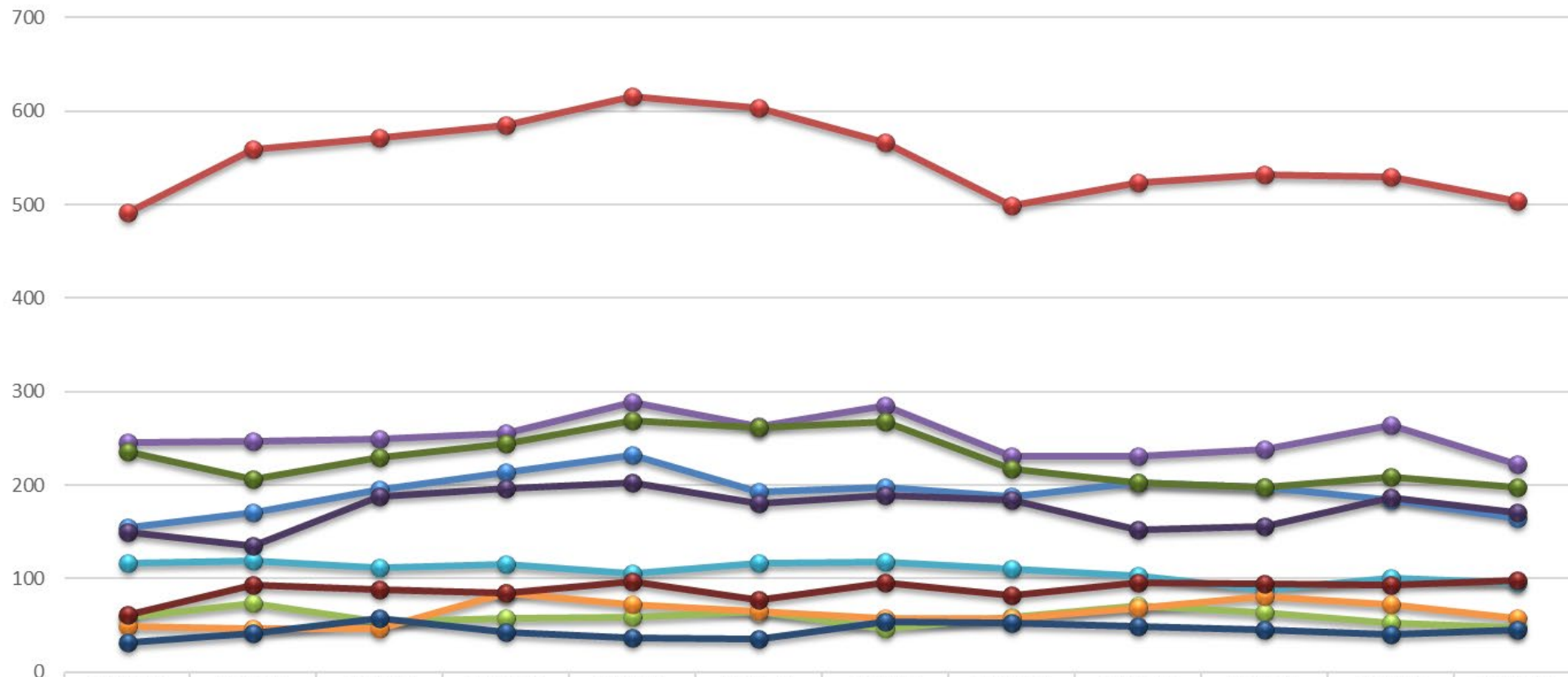
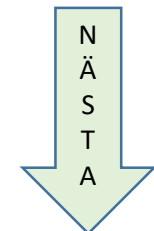


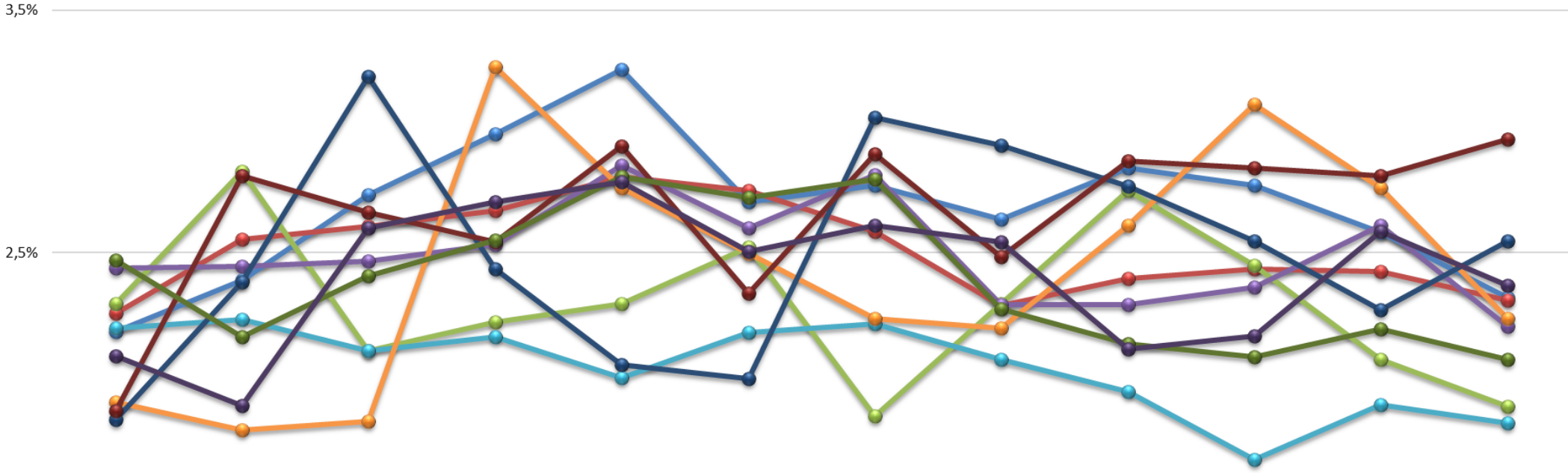
## Antal inskrivna = vårdkontakter 65+ per kommun



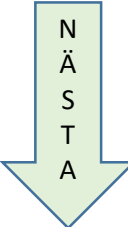
	2023-07	2023-08	2023-09	2023-10	2023-11	2023-12	2024-01	2024-02	2024-03	2024-04	2024-05	2024-06
<span style="color: blue;">●</span> Bollnäs	155	170	195	213	232	193	198	188	203	198	184	165
<span style="color: red;">●</span> Gävle	492	559	571	585	616	603	566	499	524	532	530	504
<span style="color: green;">●</span> Hofors	59	73	54	57	59	65	47	59	71	63	53	48
<span style="color: purple;">●</span> Hudiksvall	246	247	249	256	289	263	285	231	231	238	264	222
<span style="color: cyan;">●</span> Ljusdal	117	119	112	115	106	116	118	110	103	88	100	96
<span style="color: orange;">●</span> Nordanstig	49	46	47	85	72	65	58	57	68	81	72	58
<span style="color: darkblue;">●</span> Ockelbo	32	42	57	43	36	35	54	52	49	45	40	45
<span style="color: darkred;">●</span> Ovanåker	61	93	88	84	97	77	96	82	95	94	93	98
<span style="color: olive;">●</span> Sandviken	236	206	230	244	269	261	268	217	203	198	209	197
<span style="color: darkpurple;">●</span> Söderhamn	150	135	188	196	202	181	189	184	152	156	187	171



### Andel inskrivna = vårdkontakter 65+ per kommun



	2023-07	2023-08	2023-09	2023-10	2023-11	2023-12	2024-01	2024-02	2024-03	2024-04	2024-05	2024-06
Bollnäs	2%	2%	3%	3%	3%	3%	3%	3%	3%	3%	3%	2%
Gävle	2%	3%	3%	3%	3%	3%	3%	2%	2%	2%	2%	2%
Hofors	2%	3%	2%	2%	2%	3%	2%	2%	3%	2%	2%	2%
Hudiksvall	2%	2%	2%	3%	3%	3%	3%	2%	2%	2%	3%	2%
Ljusdal	2%	2%	2%	2%	2%	2%	2%	2%	2%	2%	2%	2%
Nordanstig	2%	2%	2%	3%	3%	2%	2%	2%	3%	3%	3%	2%
Ockelbo	2%	2%	3%	2%	2%	2%	3%	3%	3%	3%	2%	3%
Ovanåker	2%	3%	3%	3%	3%	2%	3%	2%	3%	3%	3%	3%
Sandviken	2%	2%	2%	3%	3%	3%	3%	2%	2%	2%	2%	2%
Söderhamn	2%	2%	3%	3%	3%	3%	3%	3%	2%	2%	3%	2%



## Andelen inskrivna som är över 65 år per kommun tom juni per år

